

OREGON CORNER RESTORATION FORM

Township 3 North Range 10 West Sections 10 & 15
 County: Tillamook Date: 3/15/98

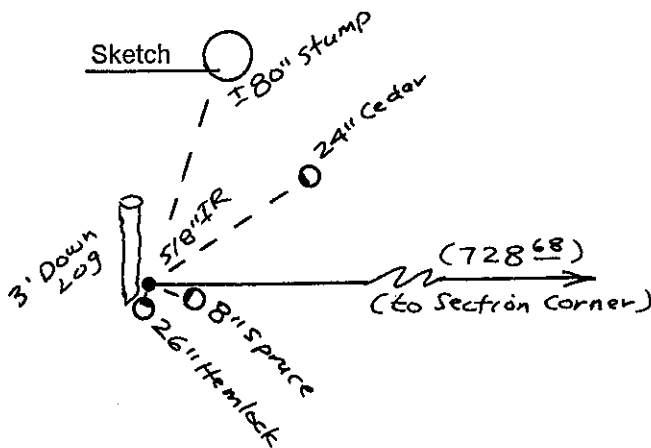
Corner Designation: Property corner X Referenced Out
 By record 728.68 feet westerly of
 the SE corner of Section 10

Previous Renewals/Surveys, etc. This monument was set by Tillamook County Surveyor Al Duncan on County Survey #B-782, dated 1977.

Monument Found: (Condition and Source)
Found Duncan's 5/8" iron rod and aluminum cap, flush with ground surface.

Accessories Found:
 - Found 1977 Tillamook County Surveyor BT, (26" Hemlock S15W, 4.58'), still 26" diameter.
 - Found galvanized 4' high steel highway style U post and tag approximately 1.5' West of corner.

Monument Detail



Monument Set (Procedure and Description) None.

New Accessories

- Set 24" dbh Redcedar, scribed PC BT, N56E, 38.6' to tag in low face, 40.4' to center of tree base
- Set 8" dbh Spruce, scribed PC BT, S70E, 9.2' to tag in low face, 9.7' to center of tree base
- Measured N18E, 46.5' to face of approx 80" dbh burnt out high stump (no tag)

Note: New BT's and the TCS tree were painted with blue tree marking paint on faces and with a ring of blue paint. New BT's have a 3/4" brass tag attached with a hub tack to lower part of low face, tags are marked "OR LS 2168, WA LS 21392". New BT's also have a Willamette Ind. yellow BT tag.

Location and Comments

Edge of a 3-foot diameter down log oriented North and South is about 2" West of the monument.

A rocked logging road runs NNW at about halfway between this corner and the Section corner.

Recent clearcut is South and East.

Hand Compass Declination: 21E

Firm/Agency

Willamette Industries
 PO Box 998, Seaside, OR

Party Chief and Notes

Andy Blachly
 No other witnesses

